



Villager

2 PTV

Club Car

Move Into the Fun Lane in the Villager™ 2 Personal Transportation Vehicle.

It's time to get out of a stuffy full size car and into the open air in a Villager 2 personal transportation vehicle (PTV). The vehicle delivers unsurpassed power, style and reliability. And its maximum speed of up to 19 mph makes it ideal for neighborhood transportation.

Standard with:



The industry's only rustproof, corrosion-resistant aluminum frame.

SportsDrive™ steering and suspension system for a smoother ride.

360° wrap-around bumpers

Your choice of metallic body colors in Candy Apple Red or Sapphire Blue, or non-metallic body colors in Sangria, Black, Beige, White, or Green.

Headlights, tail lights and a horn.

205/50-10 Kenda Pro Tour tires and 10-inch Champion alloy wheels

Front and rear safety reflectors to help other drivers see you coming

It also accommodates a wide range of accessories and options for your active lifestyle.

Available in Gasoline or Electric Models

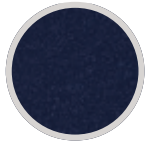
Gasoline models feature 14-hp rated single-cylinder overhead cam engines with electronic fuel injection (EFI). By eliminating carburetors and chokes, the engines start right up, even in cold weather. *They also:*

- Produce 23% more power than competitive engines.
- Deliver faster acceleration and superior hill-climbing ability.
- Feature a splash lubrication system that eliminates the need for oil filters.

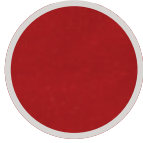
Electric models feature our Excel™ electrical system with regenerative braking. The system delivers 10 percent more battery capacity and range than competitive vehicles. It's coupled with a solid-state charging system that keeps charging during power fluctuations. *The system also:*

- Alerts you when charging begins, to the state of charge and when the car is charged.
- Warns you when the battery pack falls to 20 then 10 percent charge.
- Monitors the battery pack after charging and delivers power as needed. Your car will be ready when you are, even at your vacation home.

Choose From These Standard Colors



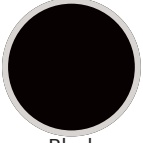
Sapphire Blue Metallic



Candy Apple Red Metallic



Sangria



Black



Beige



White



Green

Take Your Seat

Choose standard beige or white seats.



Accessories

Optional items to enhance your car.

Description	Part Number
2 Pass Canopy Kit (Black)	104008003
2 Pass Canopy Kit (Beige)	104008002
2 Pass Canopy Kit (White)	104008001
2 Pass Canopy Strut Kit*	104008901
Clear Split Windshield	47542668001
Tinted Split Windshield	47542668002
USB Port Electric	47560035001
USB Port Gas	105298601
Hour Meter	102533101

*Strut kit required for all canopy tops



Villager 2™ PTV

	ELECTRIC	GASOLINE WITH E.F.I.
Power & Performance		
Source	48-volt Excel™ with 250 Amp, Solid State Controller	404 cc Subaru, 4-cycle, Overhead Cam
Power	3.3 hp (2.4 kW) rated, Peak 13 hp (9.6 kW)	14.0 hp (10.3 kW) rated @ 3600 RPM per SAE J1940
Steering	SportDrive™	
Suspension	SportDrive™	
Batteries	Six 8-volt	One 12-volt
Charger	E.R.I.C. Automatic, 48-volt; UL and CSA listed	N/A
Style & Amenities		
Frame	AlumiCore™	
Body	Dupont Surlyn® Reflections	
Finish	Molded-in color	
Safety & Security		
Brakes	Self-adjusting, rear mechanical drum	
Park Brakes	Foot actuated, 3-position	
Speed	7 speed settings: 5-19 mph (8-31 kph)	12-15 mph (19-24 kph) standard / 19 mph (30 kph) with Xcelerator option
Dimensions		
L x W x H	92 x 47 x 69 in (232 x 120 x 174 cm)	
Wheelbase	66 in (166 cm)	
Total Vehicle Weight	909 lb (412 kg)	651 lb (295 kg)
Ground Clearance	5 in (11 cm)	
Fuel Tank	n/a	5.9 gal (22.3 L)
Tires	18 x 8.50 - 8 Tubeless	
Front/Rear Tread	35/39 in (88/98 cm)	
Warranty		
Limited 2-year	Electronics, pedal group, seats, suspension, body panels, powertrain, solenoid, GCOR, and Club Car supplied options	
Limited 12-month	Accessories	
Limited Lifetime	Frame	

Club Car operates the industry's first, biggest and most experienced Custom Solutions Department. Our automotive specialists can customize your car specifically to your taste and lifestyle. *If you can dream it, we can build it.*

To find your Local Authorized Club Car Dealer and learn more, visit www.clubcardealer.com.

©2017 Club Car LLC. Club Car believes the information and specifications in this piece of literature were correct at the time of printing. Specifications, standard features, options, fabrics and colors are subject to change without notice. Some features may be unavailable when your vehicle is built. Some vehicles are pictured with options that may be available at extra cost or may not be available on some models. Ask your dealer about the availability of options and verify that the vehicle you ordered includes the equipment you ordered. There are no warranties, expressed or implied, contained herein. See the Limited Warranty in the owner's manual or write to: Club Car, PO Box 204658, Augusta, GA 30917. The company reserves the right to make design changes without obligation to make these changes on previously sold units or systems. Rev 08/18 CNSMR0003

