

Why Choose Club Car *Lithium Ion?*



Club Car®

EFFICIENCY, SAFETY, QUALITY AND COST SAVINGS.

Club Car's Lithium Ion vehicles provide best in class performance and safety, delivering an easier and financially rewarding ownership experience. The new AC Lithium Ion battery system will provide golf course operators a seamless, low maintenance energy solution while enjoying faster charge times, less turf compaction, delivering superior energy savings in high cost markets and improved diagnostics enabling better fleet management.



EFFICIENCY AND COST SAVINGS

Automotive grade connectivity and intelligence comes standard



Club Car's Smart Charging System can be programmed to charge during non-peak hours to minimize power draw and save money, and can charge smaller numbers of cars to avoid peak energy costs, further reducing your carbon footprint and saving you thousands of dollars.

THE THREE ACCELERATION PROFILES

Economy, Comfort, Sport—allow Tempo Lithium Ion to cover all terrains. Golfers can take hills with ease, with the integrated industry leading 235 amp AC motor controller. These power options allow you to tailor the performance of the vehicle to your course.

Li-Ion batteries charge **2X faster** than Lead-Acid batteries and saves you up to **50%** in electricity costs

EASE OF USE AND REDUCED MAINTENANCE COSTS

Maximize vehicle uptime and quality

The Vehicle Control Module (VCM) provides real time health of vehicle diagnostics and can communicate system failures for increased vehicle uptime and reducing your labor only service costs. This provides a real time snapshot into health of your fleet, and identify problems ahead of time before issues arise.

FEATURES AND BENEFITS

- Industry exclusive standard state of charge gauge on every Tempo Lithium Ion
- Tempo Connect offers over-the-air updates continue to upgrade the performance of the car over the life of lease allowing you to maximize efficiency
- Handheld diagnostic tool can diagnose all electrical subsystems and provides the most comprehensive report on the market if fleet does not have Tempo Connect
- Set and forget extended storage
- No need to check state of charge every month due to the Smart Charging System and VCM, save your staff time and money
- At 699 lbs the Lithium Ion battery solution is 250lbs lighter than flooded lead acid vehicle and therefore provides less turf compaction and reduces course maintenance time



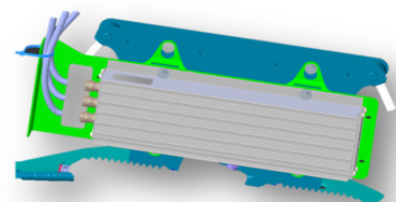
The VCM provides enhanced accuracy of battery health and charge levels ensuring golfers never get stranded.



SAFETY MADE EASY

BRAKING (DBR)

The Dynamic Brake Resistor provides improved safety and control in downhill conditions by maintaining safe speeds and protecting the health of the battery system.



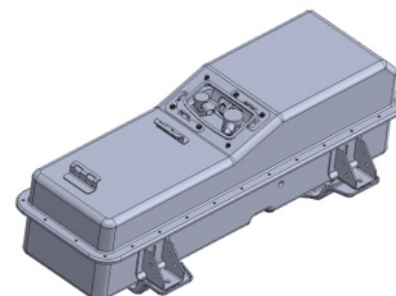
SUSPENSION

The optimized stiffer suspension for a lighter weight battery pack provides enhanced comfort with maximum safety benefits, mitigating body roll through turns.



LITHIUM ION BATTERY PACK CONSTRUCTION

Club Car's lithium ion solution is fully enclosed and self-contained in a water tight steel case, meeting IP67 standards.



QUALITY MADE EASY

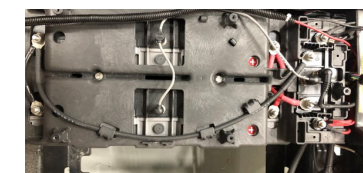
LI-ION ARCHITECTURE

- Pouch battery pack design for enhanced reliability and durability
- Club Car's lithium pouch architecture contains 32 welded connections vs EZ-Go's cylindrical design with 728 welded connections.



AUTOMOTIVE GRADE WIRING HARNESSES AND CONNECTOR PROTECTION

- Harnesses utilize flexible sleeving for conduits for longer life increasing vehicle uptime and prevents excess water pooling
- Covered terminals for increased water protection preventing battery failure



EZ-GO exposed wiring

AUTOMOTIVE GRADE DESIGN COMPONENTS

- Total battery protection from top to bottom for improved safety and reliability in golf course applications
- Steel Enclosure with closed bottom for enhanced puncture protection
- Hermitically sealed for enhanced water protection
- Battery pack coating is automotive grade and designed to last 15 years
- Automotive fuse block design offers improved reliability and serviceability.
- Easily accessible under seat for quick fuse replacements



TEMPO

RXV

TXT

BATTERY ENCLOSURE	<i>Steel, watertight enclosure</i>	<i>Plastic Enclosure</i>	<i>Plastic Enclosure</i>
VISAGE INTEGRATION (CLUB CAR CONNECTIVITY SOLUTION)	<i>Secure, over-the-air (OTA) updates available with Visage in addition to speed and car control.</i>	<i>No OTA update capability</i>	<i>No OTA update capability</i>
OFF PEAK CHARGING	<i>Program to charge in off peak hours as well as staggered charging to avoid max peak draw of charging all cars at once</i>	<i>Not available</i>	<i>Not available</i>
BATTERY GAUGE/ VEHICLE INFORMATION DISPLAY	<i>Standard LED gauge</i>	<i>Optional Fuel gauge</i>	<i>Optional Fuel gauge</i>
VCM (VEHICLE CONTROL MODULE)	<i>"Brains" of the electronic control system. It features CAN bus communication and controls vehicle inputs and outputs.</i>	<i>Not available</i>	<i>Not available</i>
HARNESS/FUSES	<i>Automotive fuse block design for simplified service and easy accessory expansion.</i>	<i>In-line fuses</i>	<i>In-line fuses</i>
CONTROLLER	<i>235 Amp (standard) 375 Amp (optional)</i>	<i>235 Amp</i>	<i>250 Amp</i>
DIAGNOSTICS	<i>Android based Bluetooth® diagnostic tool with improved graphics.</i>	<i>Handheld device</i>	<i>Handheld device</i>
CONNECTIVITY	<i>Full Visage and Shark Experience Integration with CAN communication</i>	<i>-</i>	<i>-</i>
DBR (DYNAMIC BRAKE RESISTOR)	<i>1,000 watt resistor</i>	<i>500 watt resistor</i>	<i>500 watt resistor</i>
SUSPENSION	<i>Optimized rear leaf springs for lighter vehicle for better ride quality</i>	<i>Same suspension as Electric FLA car</i>	<i>Same suspension as Electric FLA car</i>
WEIGHT	<i>699 lbs.</i>	<i>729 lbs.</i>	<i>659 lbs.</i>
EXTENDED STORAGE	<i>Set and forget storage, No need to check state of charge every month due to smart charger and VCM</i>	<i>Check vehicle state of charge every 30 days</i>	<i>Check vehicle state of charge every 30 days</i>
MANUFACTURER	<i>LG</i>	<i>Samsung</i>	<i>Samsung</i>
STORED ENERGY (NUMBER OF ENERGY OFFERINGS CLUB CAR: 1, EZ-GO: 3)	<i>3.1 kWh</i>	<i>3.0 kWh</i>	<i>3.0 kWh</i>
CHARGER	<i>650 Watts: 3.7 hr charge time 900 Watts: 2.8 hr charge time Smart Charging System</i>	<i>900 Watts; Charger lacks intelligence</i>	<i>900 Watts; Charger lacks intelligence</i>
MOTOR	<i>4.7 Hp AC</i>	<i>4.4 Hp AC</i>	<i>3.0 Hp DC</i>
BATTERY WARRANTY	<i>8-year or 2.8 MWh Lithium-Ion Battery (one time transferable)</i>	<i>5 year warranty</i>	<i>5 year warranty</i>

*There are no warranties, express or implied, contained herein. See Limited Warranty found in the owner's manual or write to Club Car, LLC. Vehicle specifications are accurate for each model at the time of publication. The company reserves the right to make design changes without obligation to make these changes on units previously sold. These vehicles are designed and manufactured for off-road use only. They do not conform to Federal Motor Vehicle Safety Standards for automobiles or to FMVSS 500 for low-speed vehicles and are not equipped for operation on public streets, roads or highways.

**Additional Restrictions Apply